



# Friends of the Florissant Fossil Beds Newsletter

Volume 2010 Issue 1

April, 2011

## Friends Board Members

Eric Bailey  
Treasurer

Heidi Bailey  
Membership

Jeff Brandt  
Newsletter

Dennis Burr  
Chamber of Commerce

William Dexter

Jane Enger  
Premium Donations

Patty Gladfelter

Wayne Johnston  
Web Master

Harold Kaelin

Sally Maertens  
President

Jerry McLain

Jean Rodeck

John Schwabe

Steve Veatch  
Vice-President

Laine Weber  
Secretary

## Update from the Interpretation and Education Division

by **Jeff Wolin**, Lead Interpretive Ranger, FLFO

*The good work continues in the Division of Interpretation and Education.*

The Friends were able to fund Jeff Wolin to attend the National Association of Interpretation's national conference in Las Vegas, NV in November. Jeff attended numerous sessions and also co-taught a session on coaching interpreters. He attended sessions on distance learning, social media, coaching, and engaging diverse audiences.

Ranger Shawn and volunteers Allan Studer and Bob Carnein have been providing interpretive programs throughout the winter. Wayside exhibits for the Hornbek Homestead, Lower Twin Rocks pull off, and the Barksdale Picnic area are being

produced and may be up in the summer of 2011.

There has been a lot of movement on the "Post to Parks" initiative. "Post to Parks" is an initiative to engage military family and youth in fun and healthy experiences at Florissant Fossil Beds such as the Junior Ranger Program. The Monument is currently

working on grants and an MOU (memorandum of understanding) with Fort Carson. In addition, the park has received \$10,000 to promote and advance the initiative.

This Spring appears to be quite filled up with school groups. The Monument is also anticipating a busy Junior Ranger Day and National

Park Week. National Park Week 2011 will be celebrated from April 16th - April 24th, 2011. It is free at all national parks and monument throughout the country. National Junior Ranger Day is Saturday, April 24th, 2011 and the Monument will be participating with a variety of kids activities and a Junior Ranger music concert.



## Fossil Pollen Reveals Florissant's Ice Age Environment

by Steven Wade Veatch

From out of the mists of prehistory—through incredibly small fossilized pollen and spores—comes an unprecedented glimpse into Florissant's past. Steven Veatch and his research team used cutting-edge science to examine pollen and spores buried with a mammoth to better understand the Ice Age world of Florissant.

The Florissant mammoth lived and died more than 50,000 years ago, during the last Ice Age. Its bones were fossilized and held safely in the ground until 1994 when a student intern found its fossil bone fragments scattered around an animal burrow.



**Figure 1.** Image of a hickory (*Carya*) pollen grain. Pollen grains are incredibly resistant and are difficult to destroy by physical or chemical processes. The plentiful and hardy nature of pollen makes it a rich source of data about past climates in specific places. Photo by D. Jarzen.

During the careful excavation of the mammoth remains, all of the fossil material was collected and bagged—including soil, gravel, and sediment samples.

A molar tooth and part of the mammoth's jaw were the main fossils recovered. Based on certain dental features of the fossilized tooth, Veatch was able to identify the remains as that of a Columbian mammoth.

Veatch recently sent a sample of the sediment layer associated with the mammoth to a lab for detailed analysis. The lab determined that the sedimentary layer is a limestone containing fine sandy and silty quartz grains. This is a caliche layer that had formed in Florissant's soil during the Ice Age. Caliche generally forms in arid or semiarid conditions.

The lab first prepared the limestone sample for processing to recover pollen and spore grains. Solutions of corrosive chemicals such as potassium hydroxide, hydrochloric acid, and hydrogen fluoride removed the organic and mineral particles in the sample. The pollen, because it is composed of some of the most chemically resistant organic compounds in nature, survived this harsh chemical processing.

Next, lab workers made microscope slides from the residual pollen. When viewed with a microscope, pollen grains from different plants have distinctive appearances that can identify the plant species they came from. The pollen and spores

were identified and counted.

The lab work yielded an amazing assemblage of Ice Age vegetation at Florissant, making it possible to reconstruct much of the local environment based on these tiny fossils. A major surprise was finding hickory (*Carya*) and oak (*Quercus*)—both hardwoods—in the Rocky Mountains from a lab sample that was at least 50,000 years old. From microscopic examination of the hardwood pollen, it appears that hickory and oak grew locally during the Ice Age. There is no reason to think the pollen grains had been reworked from sediments redeposited from earlier ages.

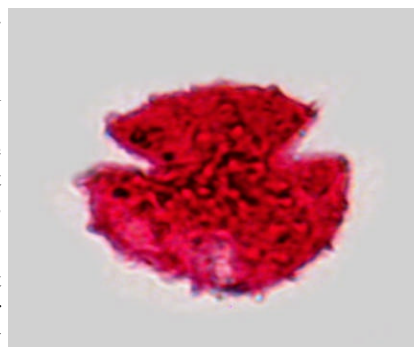
The pollen and spore assemblage is a tiny time capsule from Florissant's Ice Age and reveals that Florissant had a dry climate during this interglacial period—indicated by the abundance of pine pollen and rock moss (*Selaginella*). Most important was the rock moss, which grows on rocks and thrives on direct sunlight. Rock moss is a key indicator of a dry climate.

The Ice Age landscape at Florissant was relatively open. Scattered stands of pine were common and dotted the landscape. A few hardwoods grew near a small number of creeks. Groundcover included asters, daisies, sunflowers, and sagebrush. Rock moss thrived on the many, bright and sunny days.

Florissant's fossil mammoth and associated material has provided essential scientific information. The current pollen study is important since there is little information on interglacial floras in the continental United States. The Florissant pollen adds significantly to our understanding of North American interglacial floras. The Florissant mammoth and its associated pollen has not only unlocked some of the secrets of Florissant's Ice Age, but has earned an enduring place in the paleontological record.



*Prehistoric pine pollen from Florissant.*



**Figure 2.** Image of an aster pollen grain. Because most plant species have distinctive pollen shapes, botanists can identify from which plant the pollen came, allowing scientists to determine the plants found in a certain place at a given time. Photo by D. Jarzen.

(Continued on Page 9)

## Wolin Puts the Fossil Beds on the Map

by **Pat Hill**, published on 5/18/10 in the Pikes Peak Courier View

Infused with an adrenaline rush from his concert on the National Mall in Washington, Jeff Wolin, park ranger for the Florissant Fossil Beds National Monument, is in the composing mode. For Wolin, the road from Florissant to celebrity status in the National Park Service began with the song he wrote for the Jr Ranger program

First recorded last year on Tellernetcast.com, “Explore, Learn and Protect” is the story of the program that teaches children to revere the outdoors, the plants, the animals, the trees and the fragrance of nature.

On a lark after the broadcast, Wolin sent the recording to the Jr. Ranger’s national headquarters. While there are about 370 Jr. Ranger programs in 392 national parks, no one had yet written a song honoring the nationwide

program for children. The result? They loved it Revved up with the praise, Wolin suggested a concert to introduce the song. The response was a suggestion for a concert venue near the Lincoln Memorial in the nation’s capitol.

“I’m there!” Wolin.

They set the date for National Park Day as well as National Jr. Ranger Day April 24, 2010.

To top it off, Wolin was invited to headline the Earth Day celebration on the mall, with the NPS director, Jon Jarvis, Secretary

of the Interior Ken Salazar, along with 650 schoolchildren that were all Jr. Rangers.

“So that was all very cool. But maybe what’s cooler is that my family decided to make this a family reunion,” he said. “It

was the biggest reunion we’ve ever had; it was awesome. My wife Amy and my son Bode were there. Representing the fossil beds were the superintendent Keith Payne and Sally Maertens, volunteer extraordinaire. “It was so fun, probably one of the [most] fun weekends of my life,” Wolin said

To enhance the impact of the song, the park service has initiated a contest for Jr. Rangers to make a video about the song.

“Kids can do that these days; they’re all over it,” he said. The information is available at [nps.gov/webrangers](http://nps.gov/webrangers)

The performance in D.C. was only the beginning. “I’m in this mode,” he said. “I’m working on a song about the Tuskegee Airmen, because that’s a historic site, one about the Great Sand Dunes and another about Arrowhead Patch.”

To hear Wolin perform another of his repertoire, check “Humps, Hooves and Horns,” on You Tube. As well, he played two songs for the Teller Life show May 6 on Tellernetcast.com. Those can be found in the Teller Life archives



*Jeff Wolin performing his song, Explore, Learn and Protect, on the National Mall in Washington, D.C. April 24, 2010. Waving in the background, from left, National Park Service director, Jon Jarvis, and Secretary of the Interior, Ken Salazar. The children are part of the Jr. Ranger program from all parts of the U.S. Courtesy photo.*

## Go To [www.fossilbeds.org](http://www.fossilbeds.org)

Wayne Johnston, a Friends' Board member has volunteered to serve as our webmaster. By the time that you receive this newsletter, our website at [www.fossilbeds.org](http://www.fossilbeds.org) will be updated and running. Our seminars will be posted in addition to other educational offerings in the Pikes Peak region which you can find in this newsletter. Please pass these opportunities on to friends and family. A big thank you to Wayne for his willingness to serve.





## Meet the Friends Board

**Eric Bailey** is the Friends treasurer. He is a retired Industrial Fire Chief and spent 28 years working in a petroleum refinery. He served 5 years in the U.S. Army as a helicopter gunship pilot with one year of service in Vietnam. He has a degree in Wildlife Biology from New Mexico State University. He spent 2 years in Iran (1974-76) working for Bell Helicopter training the Imperial Iranian Army helicopter pilots when the Shah was in power. Before moving to Colorado, Eric and his wife Ellen lived in Alaska. Eric enjoys hunting, fishing, backpacking and woodworking.

**Heidi Bailey** is a stay-at-home mom and author. She has a degree in Parks, Recreation and Tourism and is also a Certified Interpretive Guide. In addition to serving on the Friends Board, she has worked with the Monument on projects such as Wee Wasp, No Child Left Inside, summer seminars and teacher workshops. She serves on the membership committee.

**Jeff Brandt** produces the Friends' newsletter. He teaches Tai Chi at the Woodland Park Library. He is on the Board of the Ute Lakes Fishing and Recreation Club. He has been a CASA volunteer for years, serving as an advocate for children in the court system.

**Dennis Burr** is the Boards' representative to the Woodland Park

Chamber of Commerce. He and his wife Debbie live in Florissant moving here from Missouri a couple of years ago. Dennis is retired from the US Air Force. He received his BA from Wayland Baptist University. He has been a volunteer at the Florissant Fossil Beds NM since 2010 and Debbie has just started volunteering. They have 3 children and 4 grandchildren.

**William Dexter** is also on the Board for the Japan-American Society of Southern Colorado. The organization is actively raising funds for Japan's earthquake disaster. Bill is also writing a textbook on the Japanese Educational System entitled "Selected Earth and Space Sciences, With a Japanese Perspective".

**Jane Enger** is in charge of our premium donation items in the Visitor Center. These items raise funds to support the Fossil Beds. She lives in Woodland Park with her husband Chris and children Micaela and Max. She is also on the Teller County Farmer's Association Board and teaches fitness classes for WP Park and Recreation. She works as a Nutrition Counselor/ Health Educator of True Life Medicine in WP.

**Patty Gladfelter** is one of the Boards newest members. Patty Gladfelter has volunteered at the front desk in the Visitor's Center

*(Continued on page 12)*

## Other Educational Opportunities in Addition to the Seminars on Page 10

### Colorado Geographic Alliance Summer Institute

Join educators from four states to explore human-environment interactions centered on the Four Corners region. This 6 day intensive training experience is designed to increase participants' geographical knowledge, field experience and instructional prowess. For info go to the CGA website at <http://www.uccs.edu/-coga/>

### Colorado School of Mines

A variety of courses, seminars, workshops, etc. are offered at many different sites. Google Colorado School of Mines for listings or call 303-273-3000.

### Colorado Division of Wildlife

For information on all of their upcoming workshops and seminars with the most up-to-date calendar of events visit: [wildlife.state.co.us/education](http://wildlife.state.co.us/education)

and

go to [www.coloradopl.org](http://www.coloradopl.org) to find out about the upcoming Project Learning Tree Seminars.

**Cripple Creek Parks and Recreation—Courses by Steve Veatch along with others.** (719)689-3514—Fees differ according to class and if Continuing Education Credits are desired.

### Field Studies in Geology: The Greater Alma Mining District (K-12)

July 10 @ 8:00—5:45pm, includes field guide and snacks.

### Field Studies in Geology: Garden of the Gods (K-12)

August 20 @ 7:30am—6:30pm, includes transportation, field guide and snacks

### Field Studies in Paleontology: Dinosaur Ridge (K-12)

October 1 @ 6:15—5:45pm, transportation and lunch and resource CD provided.

### Denver Museum of Nature and Science:

For information on their many and varied programs go to [DMNS.org](http://DMNS.org)

### Pikes Peak Urban Gardens:

For information on the various activities and workshops go to: [larry@ppugardens.org](mailto:larry@ppugardens.org) - 719-651-3416

The last gardening workshop until the fall will be held on Saturday, May 14, 2011 from 10-11:30 at the Horace Mann MS Auditorium in Colorado Springs - \$5.00

"Grow Your Best Warm Season Organic Veggies Ever"

\* Larry is doing a full day seminar for the Friends on May 7, 2011 in Colorado Springs.

### Rocky Mountain Nature Association Seminars:

For their free 2011 course list go to:

[fieldseminars@rmna.org](mailto:fieldseminars@rmna.org)

These seminars run through November 2011 and cover many topics such as birds, wildfires, native plants, fire ecology, photography, bears, art outdoor skills, and

*(Continued on Page 9)*

### Sexi, Peru Project (Missing from the last Newsletter)

#### New Progress in the Friends Partnership with the Petrified Forest in Sexi, Peru

by **Herb Meyer**, Florissant Fossil Beds NM Paleontologist

The Friends of Florissant continued to support their new partnership with the nonprofit organization in Sexi, Peru by providing financial support to help develop the infrastructure for the small new museum there. The museum building was constructed from adobe bricks several years ago, using grant support, but it has never had water or electricity. These were installed using the funds that the Friends transferred to Peru.

The exhibits in the museum are still very few, consisting only of four interpretive panels that we created last year with funding from the Friends of Florissant. We are currently looking to involve one or two graduate students from the Museum Studies program at the University of Colorado in Boulder to continue the effort to assist the community of Sexi in developing its new museum and education programs.

The site at Sexi consists of an Eocene fossil forest with large petrified trees and fossil leaves. It is protected by the government of Peru. We (the

monument's paleontologist Herb Meyer and his collaborator Deborah Woodcock at Clark University) have been studying the fossil woods and leaves for 10 years to help understand the climate of equatorial South America during the Eocene 39 million years ago. We also have been closely involved in helping the local community to develop the site for geotourism. There are currently very few visitors who venture into this remote little village high in the Andes Mountains, but this will undoubtedly change as more people become aware of the site.

Members of the Friends who might be interested in joining us on our next trip to Sexi should contact [Herb\\_Meyer@nps.gov](mailto:Herb_Meyer@nps.gov).

The Friends of Florissant Fossil Beds maintains an account to assist with this project. Donations to the "Peru Project Fund" are much appreciated and can go a long way in helping this local community to understand and conserve their fossil forest.



*Installation of electricity and water in the Sexi museum*



*Herb Meyer beside fossil log*



*Museum in Sexi, Peru*



*Posters funded by the Friends being presented to the museum. Members of the Sexi Association, Deborah Woodcock, and Herb Meyer*



*Fossil log*



## 2010 Intern and Student Staff Program (Missing from last newsletter)

### Accomplishments of Paleontology Interns and Student Staff During 2010

by *Herb Meyer, FLFO, Paleontologist*

The Monument had a paleontology staff of nine during the summer of 2010, which allowed us to achieve many new accomplishments. Three of the paleontology interns were recruited through the Geological Society of America's GeoCorps program and received partial funding from the Friends of the Florissant Fossil Beds. Ariel Demarest worked on our excavations of fossil insects and plants. Elizabeth Waite prepared a draft proposal that can be submitted to designate this area as a UNESCO GeoPark. Allison Platsky completed the annual monitoring of the Monument's fossil sites to assess site conditions and look for new disturbances. Another intern, Kerry Petrie, was sponsored by the University of Colorado at Boulder, and she worked to reorganize and digitize many of the photographs of fossils in the Monument's archive collection.

We also had three student employees in paleontology. Jenell Thoene managed the research excavation of fossil plants and insects, and she is using the fossil insects in statistical analyses for her Masters thesis at University of Colorado in Boulder. Bret Buskirk worked on splitting fossil shale that we recovered from the county road cut during construction a couple of years ago, and she is also beginning a doctoral program at the University of Washington that will include examination of the fossil clams and snails from Florissant. Christina Whitmore continued as the Monument's Museum Technician through the early part of the summer, and she completed the major accomplishment of deaccessioning the many historic objects that no longer have relevance to the Monument's collections. These were given to the Cripple Creek Museum. Christina moved during the summer, and our new volunteer, Conni O'Connor, is taking on the responsibilities for managing the Monument's collections.

Having a large staff in paleontology makes it possible for the Monument to achieve projects relating to its primary purpose. New intern positions will again be offered for 2011.

### Friends of the Florissant Fossil Beds,

I would like to thank you for your support of the paleontology internship program at the Florissant Fossil Beds National Monument. Because of your generous support, I have been afforded a truly irreplaceable internship experience full of personal and intellectual growth.

I am currently an undergraduate Geosciences student at the University of Texas at Dallas. Paleontology has always been an academic interest of mine, and this internship has allowed me to participate in projects that are very unique to the Florissant, Colorado area.

As an intern at the Fossil Beds this summer, my work focused on creating application documents for a proposed local Geopark. I was given the opportunity to learn about the remarkable history and geology of not only the Florissant Fossil Beds but of the entire south-central Colorado region from Florissant to Canon City. My project allowed me to gain valuable experience collaborating with

others, communicating about geologic resources, and developing a proficiency with the map creation program, ArcMap. In addition to my Geopark work, I was able to assist on other paleontology projects going on this summer, including excavations and Inventory and Monitoring projects.

My time at Florissant has been challenging and beneficial. I appreciate the contributions you made that allowed me to come to Florissant and be a part of the exciting projects taking place at the Monument.

Best regards, **Elizabeth Waite**

Every morning, as I hike out to the excavation site, I get to breathe in the sage-resin-vanilla scented air, I get to admire the potentilla, Indian paintbrush, and wild iris, I get to watch the many insects flitting about. Then, after opening the excavation site and allowing the rabbits and salamanders to vacate the pit, I dig into another world of plants and insects. I get to imagine the sight and smells of this ancient place, sometimes so similar and sometimes wildly different from the present. Even on the wretched days when I'm sweating my brains out and splitting shale endlessly without finding a thing, I am simultaneously delighted. I never feel so alive as when I'm doing field research – I love being so close to nature, working so hard and beginning to understand it. Each day is so vivid and bright and full of the excitement of



*Elizabeth Waite*



*Ariel Demarest*

(Continued on page 7)

## Interns (Continued)

*(Continued from page 6)*

new knowledge. Thank you so much,  
Friends of the Florissant

Truly, when I visited the Fossil Beds last summer, I never dreamed I would be working at the monument in a paleontology position. As I entered school last fall, I was preparing to graduate with a degree in biology, concentrating on entomology. On a lark, I decided to take a course in paleobiology with Dena Smith, enjoyed myself immensely, and was promptly recruited into her lab. Here I was introduced to the field of paleoentomology and encouraged to apply for this internship. Because of my background in entomology, my project as an intern was to assist in the ongoing excavation to collect insects for Jenell Thoene's research on insect diversity at Florissant. I lead the excavation every other week while Jenell worked in Boulder, collecting hundreds of insect and plant fossils, then preparing them for entrance into the collections. With the end of excavation this year, Jenell should have enough specimens to write her thesis and achieve her masters.

I will be moving on to graduate school myself with in the next two years, in either entomology or paleoentomology. I may return to Florissant for my thesis research, but even if I do not, this has been a wonderful experience. Thank you again for supporting this sort of opportunity for young scientists!

Cheers, **Ariel Demarest**



*Ariel Demarest, Bret Buskirk, Jenell Thoene, Allison Platsky, Elizabeth Waite*



*Allison Platsky*

## We are going GREEN!

Please send us your email address so that you will continue receiving future newsletters. We will be sending them out by email to save money and paper!

See page 11 for details



## Your Friends' Money at Work

With so many things changing over the last few years with the economy, the Friends' Board is committed to keeping our dues at the current level.

Our revenue for all that we support at the Florissant Fossil Beds NM comes from four major sources: memberships, grants, donations and donation premiums.

Over the last few months we have funded the following expenditures or approved the following expenditures for the summer:

Interpretive Conference in Nevada for Lead Interpreter, Jeff Wolin - \$727.00

Summer Paleo Intern - \$4750.00

Renewal of Friends' website for 3 years - \$250.00

Shale for school programs - \$600.00 (from a private quarry)

Woodland Park Chamber of Commerce Membership - \$100.00

Pikes Peak Attractions Membership - (all Volunteers at the Monument receive a pass for entrance to many attractions in the Pikes Peak region) - \$75.00

Support for the Jr. Ranger Day - April 23, 2011 - \$100.00

All expenditures over \$250.00 must have Board approval. For anything over that amount, an application for the monetary support must be filled out and voted on by the Board with signatures from the Superintendent, the Friends' President and 2 other Board members. All monies spent must be directly related to helping the Monument.

Please consider donating to anyone of the following funds:

Founder Fund - Established at the Florissant Fossil Beds

40<sup>th</sup> Anniversary to help with the new Visitor Center

Wagon Wheels - for replacement of stolen Wagon Wheels at the Hornbeck Homestead

Summer Internships - Paleo and Interpretation

Jr. Ranger Days

We deeply appreciate your support in the past and look forward to having you as a partner in the future to help the Florissant Fossil Beds.





## Friends' 25<sup>th</sup> Anniversary

In August of 2012, the Friends' will be celebrating the 25<sup>th</sup> Anniversary of the establishment of the Friends' of the Florissant Fossil Beds National Monument. The celebration banquet will be held at The Nature Place in Florissant where the Florissant Fossil Beds National Monument help its 40<sup>th</sup> Anniversary banquet. Watch future newsletters for more information. Mark

your calendars to join us there. If you are interested in helping please call the Monument and ask for "Seminars" and leave a message.

## Friends' Trail Project Volunteer "Work Day"

**Where: Florissant Fossil Beds National Monument**

**When: Saturday, June 11, 2011**

**Time: 10:00 – 3:00**

The Friends of the Fossil Beds National Monument invite you to attend our volunteer trail "work day". The work will be trail reconstruction along a section of the Hornbek Wildlife Loop, 1/3 of a mile east of the visitor center. The section of trail is heavily worn and eroded. The work will consist of digging, shoveling, lifting rock and placement, water bar construction and trail tread grading. Project tasks will be assigned by skill level and physical condition. All are welcome.

We will meet at the Monument's Visitor Center parking lot at 10 am, have a brief orientation and safety review and proceed to the trail site by 10:15. Please bring work gloves, water bottles, sun

screen and wear sturdy shoes/work boots. The monument will provide all the tools necessary for the project. The Friends will provide lunch.

If you plan on attending please contact Sally Maertens at 687-9204 by Friday June 10, in order to determine a lunch count. If you have special dietary needs we recommend you bring your own lunch.

The volunteer "work day" will be fun, entertaining and rewarding. Hope to see you there. If you have any questions about the project contact John Schwabe at 689-3174.

## Pollen (Continued)

*(Continued from page 2)*

**Note:** Steven Veatch is the principal investigator working on the Florissant pollen project. His team includes David Jarzen of the University of Florida, Estella Leopold of the University of Washington, and Herbert Meyer of Florissant Fossil Beds National Monument.

## Educational Opportunities (Continued)

*(Continued from page 4)*

cultural history. The Association is also sponsoring a trip to Tatra Mountains National Park in southern Poland.

### **Western Museum of Mining and Industry:**

For information on their various offerings go to [info@wmmi.org](mailto:info@wmmi.org)

### **Yellowstone Field Institute:**

Although not in the Pikes Peak region, check out the amazing seminars, workshops etc. offered through the Yellowstone Field Institute at [www.YellowstoneAssociation.org](http://www.YellowstoneAssociation.org) and click on Yellowstone Field Institute.

## Friends' Summer Seminars—2011

This is the 17th summer that the Friends of the Florissant Fossil Beds have offered seminars for the general public. Continuing Education credits (CE) through BOCES and undergraduate and graduate credit are available through Adams State College.

If you are interested in any of the seminars listed below, please call the Florissant Fossil Beds NM at 719-748-3253 and ask for "Seminars." Registrations will be taken anytime after April 15. Discounts are available for members of the Friends and teachers.

We look forward to seeing you this summer at one or many of our seminars. A more complete description of each seminar will be available on the Friends' website [www.fossilbeds.org](http://www.fossilbeds.org) after April 15 and in the next Friends' newsletter or on this website.

### SEMINARS

Saturday, June 18, 2011 - Jerry McLain, Director of Alumni Relations, Colorado Outdoor Education Center

**"Historical Ranch Sites of the Sanborn Western Camps"**

9 AM to 5 PM, Sanborn Western Camps, Florissant, CO

Friday, July 8, 2011, - Dr. Brian Linkhart, Biology Department of Colorado College

**"Natural History and Ecology of Flammulated Owl"**

5 PM to 2 AM, Manitou Experimental Forest, Woodland Park, CO

Monday and Tuesday, July 11/12, 2011, - Doug Coleman, Director, Wintergreen Nature Foundation, Wintergreen, Virginia.

Day 1—"Wildflowers of the Central Rockies"

Day 2—"Blowing in the Wind: Knowing Your Grasses"

9 AM to 5 PM, Florissant Fossil Beds NM, Florissant

Saturday, July 16, 2011, Dr. Reinhold Wobus, Geology Department of Williams College, MA.

**"Exploring the Basement: Learning to See What Isn't There"**

9 AM to 5 PM, Florissant Fossil Beds NM

Tuesday, July 19, 2011 - Toni Ratzlaff, Art teacher, Woodland Park Schools

**"Easy Print Making - Indoors or Out"**

9 AM to 5 PM, Florissant Fossil Beds NM

Saturday, July 30, 2011 - Steven Veatch, Vice-President of the Friends

**"Discovering Colorado's Ice Age Environments"**

9 AM to 5 PM, Florissant Fossil Beds NM

Wednesday and Thursday, August 3/4, 2011 - Dr. Bob Carnein, retired Geology professor

**"Geologist as Detective" - Part 1 and 2, (can be done separately but 2 can't be done without taking 1)**

9 AM to 5 PM, Florissant Fossil Beds NM

Tuesday, August 9, 2011 - Chris Tholl, Director of High Trails Outdoor Education Center, Florissant, CO

**"Teaching Renewable Energy, Tools for K-12 Teachers and Parents"**

9 AM to 5 PM - Sanborn Western Camps, Florissant

Saturday, August 27, 2011 - 9am to 5pm, Steven Veatch,

**"Studies in Field Geology: Garden of the Gods"**

This seminar will begin in front of the Visitor Center at Garden of the Gods.

### Also Coming in this Summer of 2012

#### 25th Anniversary of the Friends

2 Special Seminars to be held at Colorado College in Partnership with the Environmental Studies Department

#### ICE AGE MAMMALS of SNOWMASS

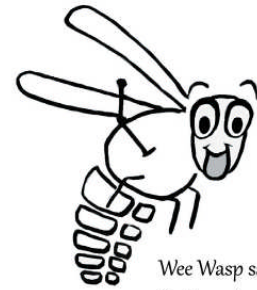
and

#### CLIMATE CHANGE

Both done with Staff from the DMNS

# Two Free Gifts For You!

## Help us Go Green and Make New Friends



Wee Wasp says:  
Go Green!

Our New Years resolution for 2011 was to make the Friends of Florissant Fossil Beds National Monument a more environmentally-friendly organization and to encourage more people in helping us support programs in preservation and education.

### Help us Go Green and receive a free gift:

From now on, the quarterly newsletter will be offered in a digital format via email and the web. This will save a lot of paper and money. An added benefit is the newsletter will be in full color. We will also send regular email updates to let you know what's happening at the Monument.

The money we normally spend on printing and postage will be used to fund programs like Junior Ranger, Wee Wasps, summer internships, and more. You can help by sending us your current email address. Please fill out the form below (left side) or email us at:

**FriendsOfFLFO@gmail.com** and you will receive your free gift.

### Help us Make New Friends and receive another free gift:

Please help us to make more friends! Enroll a new member using the form below (right side).

**Yes! I want to Green my membership!**

Name: \_\_\_\_\_

Address: \_\_\_\_\_

E-mail: \_\_\_\_\_

I do not use email. Please continue to send my newsletter via regular mail.

Mail: Friends of Florissant, Box 851, Florissant CO 80816  
or email us at: FriendsOfFLFO@gmail.com

**Enroll a Friend:**

<input type="checkbox"/> 1 Year \$15	<input type="checkbox"/> 1 Year Family \$25
<input type="checkbox"/> 2 Year \$27	<input type="checkbox"/> 2 Year Family \$40
<input type="checkbox"/> Lifetime \$300	<input type="checkbox"/> Corporate \$100

Name: \_\_\_\_\_

Address: \_\_\_\_\_

E-mail: \_\_\_\_\_

Enrolled by: \_\_\_\_\_

To receive your free gift, write **your** address on the back.  
Mail: Friends of Florissant, Box 851, Florissant CO 80816



## Board Members (Continued)

(Continued from page 4)

since January 2009. Her previous/current career as a physical therapist was in Humboldt County California. She is a native Coloradan who graduated from University of Colorado Medical Center in 1976. She currently works part-time at SERC Rehabilitation in Woodland Park and occasionally offers unsolicited advice to the Park Rangers on posture and body mechanics. The second career option on her STRONG Vocational Inventory in college was park ranger so she now gratefully gets to fulfill that aspiration through the back door.



**Wayne Johnston** is our new webmaster and is a member of the Audit Committee. He is the Treasurer of the Lake George Gem and Mineral Club. He loves photography and has enjoyed remodeling his home in Divide.

**Harold Kaelin** spent 33 years with AT&T in the legal department working on antitrust litigation. Over his retirement years in addition to being a long time Friends Board member, Harold has served on many other Boards including the Gold Belt National Byway, Teller County Open Space, Teller County Parks Board, Friends of Florissant Library and Habitat for Humanity. Harold and his wife Celinda have given many hours to the Pikes Peak Historical Society's Board and the establishment of the wonderful museum in Florissant.

**Sally McCracken-Maertens** is the President of the Friends. She has been a volunteer at the Florissant Fossil Beds for 15 years. She is the Vice President of the Pikes Peak Historical Board and is a science educator for the Catamount Institute. She has spent over 50 years in public education, first as a teacher, then a curriculum specialist, and as an elementary school principal in New York before moving to Colorado 15 years ago.

**Jerry McLain** is the Director for Alumni Relations for the Colorado Outdoor Education Center in Florissant Colorado. Jerry has been there for over 30 years and is helping us with the 25th Anniversary next summer. Our banquet will be at The Nature Place which is part of COEC. Jerry loves history and is an avid birder. He will be presenting a seminar for us this summer.

**Jean Rodeck** is retired as a past Superintendent of Florissant Fossil Beds NM. As a Board member, she helps us with our big events. She is also on the Board of the Ute Pass Historical Society and the University of Colorado Museum. For 42 years, Jean worked as a museum curator, exhibit artist, management assistant, and interpretive planner. She did these things in the Western Museum Laboratory in San Francisco, at Rocky Mountain, Yellowstone and Redwood National Parks.

**John Schwabe**, one of our newest members - will be leading the Volunteer Trail Maintenance Day in June (see article on Page 9). John has volunteered at Florissant Fossil Beds since January 2009. He enjoys doing trail maintenance and erosion control projects. He coordinates the Monument's projects with the Boy Scouts of America. John retired from California Department Fish and Game where he served as a Fish Habitat Specialist. His duties included coordinating fish and wildlife habitat restoration projects from Eureka California to the Oregon border. He also coordinated volunteers with the AmeriCorps Watershed Stewards and mentored the AmeriCorps Stewards in Humboldt County. John received his bachelor's degree in 1976 from Humboldt State University Arcata, California in Geography and Natural Resource Planning



**Steven Veatch** is Vice-President of the Friends. He has recently been appointed by the Cripple Creek City Council to serve as a member of the Historic Preservation Commission. The Commission operates programs that address the needs of historic residential and commercial structures. In addition, Steve teaches many courses in paleontology, geology, and the history of the area.

**Steven Veatch** is Vice-President of the Friends. He has recently been appointed by the Cripple Creek City Council to serve as a member of the Historic Preservation Commission. The Commission operates programs that address the needs of historic residential and commercial structures. In addition, Steve teaches many courses in paleontology, geology, and the history of the area.

**Laine Weber** is the Secretary for the Friends Board. She is a 6th grade science teacher at the Woodland Park Middle School. Laine has been the advisor to several clubs in the MS over the last few years. She is also a seasonal ranger at the Florissant Fossil Beds NM. Her daughter Melanie is just finishing her Freshman year at Fort Lewis College in Durango.

## Advertising Rates

Business Card Size:	\$6.00
¼ Page	\$12.00
½ Page	\$24.00
Full Page	\$48.00

You may submit requests for advertisements by sending an email to FriendsOfFLFO.org.

©2011, Friends of the Florissant Fossil Beds, Inc. Newsletter published Quarterly: March, June, September, December. Articles may be reprinted with permission, except where noted or where the article originally appeared in another publication. For questions, contact the editor (brandtjm@gmail.com).

*Friends of the Florissant  
Fossil Beds*

**P.O. Box 851  
Florissant, CO 80816**

**PHONE:  
(719) 687-9204**

**E-MAIL:  
FriendsOfFLFO@gmail.com**

**We're on the Web!  
See us at:  
www.fossilbeds.org**

### **Email Addresses Wanted—Please send them to Heidi Bailey (FriendsOfFLFO@gmail.com)**

Please send feedback on the newsletter or any topic you are interested in to Sally Maertens. If you are interested in serving on various committees or the Board, please contact Sally Maertens at the address to the left or by email (FriendsOfFLFO@gmail.com).

For questions, contact the Editor.

Staff:

**Editor:** Jeff Brandt, (brandtjm@gmail.com)

**Editorial Staff:** Sally Maertens, Heidi Bailey, Eric Bailey

**Send contributions via email as a Word document or in rich text format (rtf) to Jeff Brandt at brandtjm@gmail.com).**

The Friends of the Florissant Fossil Beds newsletter is published quarterly by the Friends of the Florissant Fossil Beds and is governed by the by-laws of the Friends. Articles appearing in the newsletter do not necessarily reflect the views of the National Monument, officers, members, or sponsors of the Friends.

## About Our Organization....

The Friends of the Florissant Fossil Beds is a non-profit corporation organized in 1987 to help the Florissant Fossil Beds National Monument achieve its mission to protect and preserve our national treasures. We support and promote programs and activities that enhance the Monument's educational, research, and scientific objectives.

Membership fees and donations to the Friends of Florissant Fossil Beds are used for:

- Environmental education programs
- Support for our sister park in Sexi, Peru
- Field seminars
- Year-round interpretive programs
- Jr. Ranger programs
- Paleontological and geological resources
- Natural history resources
- Publications
- Support for Paleo interns each summer
- Funding for special events at the Monument
- Funding and coordination of the Summer Seminars Program
- Planning, funding and coordination for the Friends 25th Anniversary in 2012.

**FRIENDS OF THE FLOISSANT FOSSIL BEDS**  
P.O. Box 851  
Florissant, CO 80816